

DOI: 10.31319/2519-8106.1(48)2023.280789

УДК 004.942:669.18

Krasnikov Kyrylo, PhD, associate professor at the Department of Systems Software
Красніков К.С., кандидат технічних наук, доцент кафедри програмного забезпечення систем
ORCID: 0000-0002-4241-0572
e-mail: kir_kras@ukr.net

Lyzhov Mykyta, PhD student at the Department of Systems Software
Лижов М.В., аспірант кафедри програмного забезпечення систем

Fatykhova Tanzilya, master's degree student at the Department of Systems Software
Фатихова Т.Ф., магістрантка кафедри програмного забезпечення систем

Dniprovskiy State Technical University, Kamianske
Дніпровський державний технічний університет, Кам'янське

COMPUTER ANALYSIS OF INFLUENCE OF MELT BLOWING MODES ON LADLE LINING MECHANICAL EROSION

КОМП'ЮТЕРНИЙ АНАЛІЗ ВПЛИВУ ПРОДУВНИХ РЕЖИМІВ РОЗПЛАВУ НА МЕХАНІЧНЕ РОЗМИТТЯ КОВШОВОЇ ФУТЕРОВКИ

In the process of blowing, turbulent melt flows erode the ladle lining and its thickness decreases due to mechanical erosion. The thickness of the steel ladle lining gradually becomes thinner with each casting. The degree of erosion depends on the tangential melt speed. In steel production, they try to slow down this wear, because each lining repair costs considerable time and resources. Scientists paid attention to this problem in publications, in particular, on mathematical modeling of lining wear. A large number of conditions of this process are subject to research, in particular, the number and location of blowing tuyeres, as well as blowing power. Firstly, it is necessary to quickly mix the impurity in the melt, and secondly, to preserve the lining of the ladle. Computer visualization and analysis of this process involves its course and results in the form of calculated fields, in particular, wear. The result fields are stored in a database. Also they are added and processed through a specially designed website. It allows researchers to register and fill in the experiment form, as well as add literature sources of data. The list of literature is used in almost all experiments to compare results. Simulation of the process at blowout rates of 40, 60 and 90 l/min and the number of blowout plugs (tuyeres) from one to three showed that the greatest scouring is predicted at the bottom, near the blowout plugs, and the transition to each higher blowout rate increases the scouring intensity by about 15 %. Turning off the tuyeres after 1 minute of blowing significantly reduces erosion by at least 35 %. If we consider the ladle wall, without disconnecting the tuyere, the flow rate of 90 l/min is the most destructive.

Keywords: software, computational fluid dynamics, mechanical erosion of lining, teeming ladle.

Під час транспортування з одного цеху в інший температура розплаву у ковші зберігається завдяки шару вогнетривкої футерівки всередині на стінках і дні. У процесі продування турбулентні потоки розплаву розмивають футерівку і товщина її шару зменшується через механічну ерозію. Метою роботи є математичне моделювання механічного зносу футерівки ковша потоками розплаву під час продування аргонном. Дослідженню підлягає велика кількість умов цього процесу, зокрема, кількість і розташування фурм продування, а також потужність продування. По-перше треба і домішку швидко перемішати у розплаві, а по-друге і футеровку ковша зберегти. Комп'ютерна візуалізація і аналіз означеного процесу передбачають його хід і результати у вигляді розрахованих полів, зокрема, зносу. Поля зберігаються у базі

даних і додавання та їх обробка здійснюється через спеціально розроблений веб-сайт. Він надає можливість дослідникам зареєструватися і заповнювати форму дослідів, а також додавати літературні джерела даних. Перелік літератури використовується практично у всіх дослідів для порівняння результатів. Моделювання процесу в умовах потужності продування 40, 60 і 90 л/хв та кількістю пробок продування від однієї до трьох показало: найбільше розмиття прогнозується на дні, поблизу фурм продування, причому перехід на кожну вищу потужність продування підвищує інтенсивність розмиття приблизно на 15 %. Вимикання фурм після 1 хвилини продування значно зменшує розмиття мінімум на 35 %. Якщо ж розглядати стінку ковша, то без відключення фурм витрати 90 л/хв є найбільш руйнівними.

Ключові слова: програмне забезпечення, комп'ютерне моделювання, модифікації розплаву в ковші, газове перемішування.

Problem's Formulation

The steel ladle lining protects the metal ladle body from overheating and the liquid steel from solidification. One of the reasons for the lining thinning is its erosion by fast flows of liquid steel near the walls and bottom of the ladle (for example, near the blow tuyere). Metallurgists periodically replace the lining, looking for places of the greatest wear, which consumes time and material resources. Predicting the lining wear process opens the way to optimizing and saving these resources.

Analysis of recent research and publications

The article [1] is devoted to the study of two ladle designs (standard and with a reinforced striking part in the center of the bottom of the ladle). The figure of the experimental setup and the results of comparison of the two cases are given. The comparison showed a significant improvement in the resistance of the bucket lining to erosion wear.

In [2], the results of physical and mathematical modeling of the process of blowing the melt with one tuyere near the ladle wall are compared. The physical model includes oil and water to replace slag and metal melts, respectively. The comparison showed sufficient adequacy of the mathematical model, which takes into account the free surface.

In papers [3—4], the authors investigate the process of destruction of a typical ladle lining. They present its physical properties and conduct numerical experiments to find out the best technological conditions in terms of the depth of lining destruction.

In [5], the finite volume method is used for numerical simulation of lining destruction. Using the model, the authors obtained the places of the deepest erosion — the middle of the bucket height. The bucket has a cylindrical geometry.

The numerical study [6] is devoted to two cases: the lining is a homogeneous medium with average physical properties; the lining is a porous medium with liquid slag.

Formulation of the study purpose

The aim of the work is to mathematically model the mechanical wear of the ladle lining by melt streams during argon purging using the developed research software.

Presenting main material

Simplifying the problem of mathematical modeling, it is accepted:

- 1) The melt has the geometry of a cylinder (Fig. 1). The melt depth is a constant value.
- 2) Wave motion of the melt surface is neglected and it is assumed to be flat.
- 3) The melt has all the features of a Newtonian viscous fluid with gas content.
- 4) The melt density is assumed to be constant.
- 5) Boussinesq's assumption of gas accelerating the vertical component of velocity is used.
- 6) Slag layer is not taken into account.
- 7) Lining erosion has a rate that depends linearly on the melt velocity in the vicinity.

Fluid dynamics is determined by the law of conservation of momentum. Continuity of fluid and gas motion correspond to the law of conservation of mass:

$$\frac{\partial \vec{v}}{\partial t} + (\vec{v} \cdot \nabla) \vec{v} - D_v \nabla^2 \vec{v} = -\nabla \left(\frac{p}{\rho_0} \right) - \alpha \vec{g}; \quad (1)$$

$$\nabla \cdot \vec{v} = 0; \quad (2)$$

$$\frac{\partial \bar{\phi}}{\partial t} + \nabla \cdot [\bar{\phi}(\bar{\mathbf{v}} + \bar{\mathbf{v}}_f)] - D_{\bar{\phi}} \nabla^2 \bar{\phi} = S_{\bar{\phi}}; \quad (3)$$

$$S_{\bar{\phi}} = \frac{q}{V} \frac{T_{air}}{T_m}, \quad (4)$$

де D_v, D_a — effective coefficients of kinematic viscosity and gas diffusion respectively; α — fraction of argon in the melt; g — free fall acceleration (assumed to be 9.81 m/s^2); p — pressure field (found due to the condition of solenoidal velocity field); q — gas consumption; T_{air} and T_m — initial gas temperature and melt temperature ($1800 \text{ }^\circ\text{C}$ is assumed).

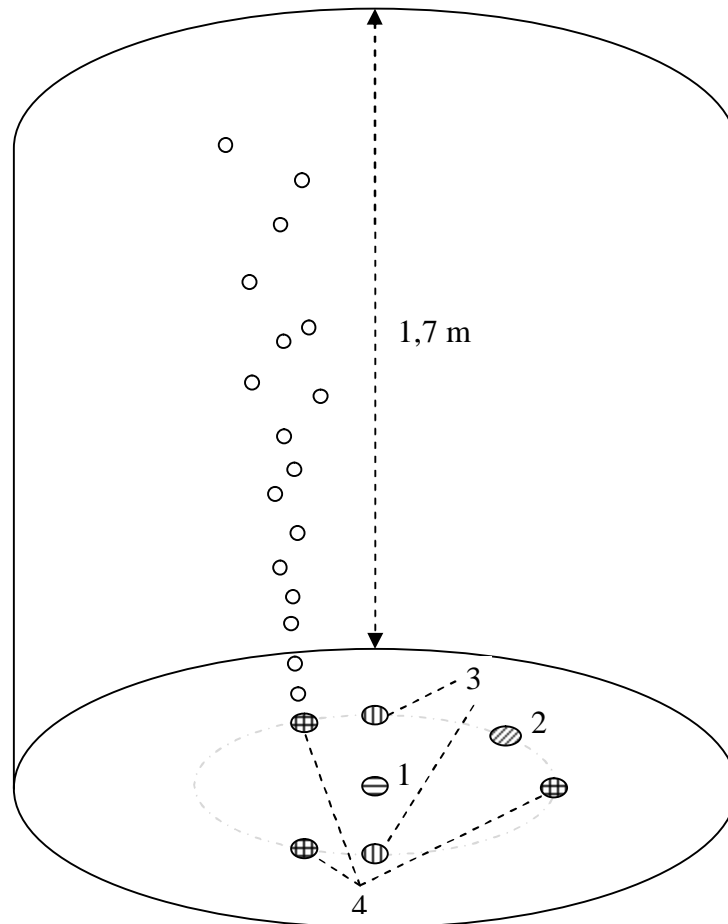


Fig. 1. A geometry of the body melt (1/20 scale) with placements of tuyeres

The field of residual damage to the lining is determined by the melt rate along the surface of the walls and bottom of the bucket:

$$\frac{\partial s}{\partial t} = k_s |\bar{\mathbf{v}}^{\parallel}|, \quad (5)$$

where s — is the depth of lining erosion; k_s — coefficient, which adjusts the adequacy of the model to the real erosion process.

The velocity equation is supplemented by boundary conditions that correspond to its components — perpendicular and parallel to the surface w of the solid:

$$\left. \frac{\partial \bar{\mathbf{v}}^{\parallel}}{\partial n} \right|_w = 0; \quad (6)$$

$$\vec{v} \cdot \vec{n} = 0, \quad (7)$$

where n — normal to the wall.

The gas transport equation is supplemented by impermeability boundary conditions on solid surfaces. A constant gas release rate is set on the upper surface of the melt.

The finite volume method and the Euler method are used. The problem of the explicit solution scheme is a significant limitation of the maximum value of the time step due to the presence of the Laplacian operator in the equations. This limitation can be avoided by using an implicit scheme.

The peculiarity of the model of the subject area of numerical study of bucket lining erosion, as well as other scientific studies, is the availability of a list of literature sources, which is used to review modern solutions to the problem, obtain reference data and verify the results.

It is proposed to implement the subject area model using a database based on MS SQL Server and a website based on MS ASP.NET MVC. These technologies are well combined with the MS Visual Studio programming environment, in which we will program in the popular C# language.

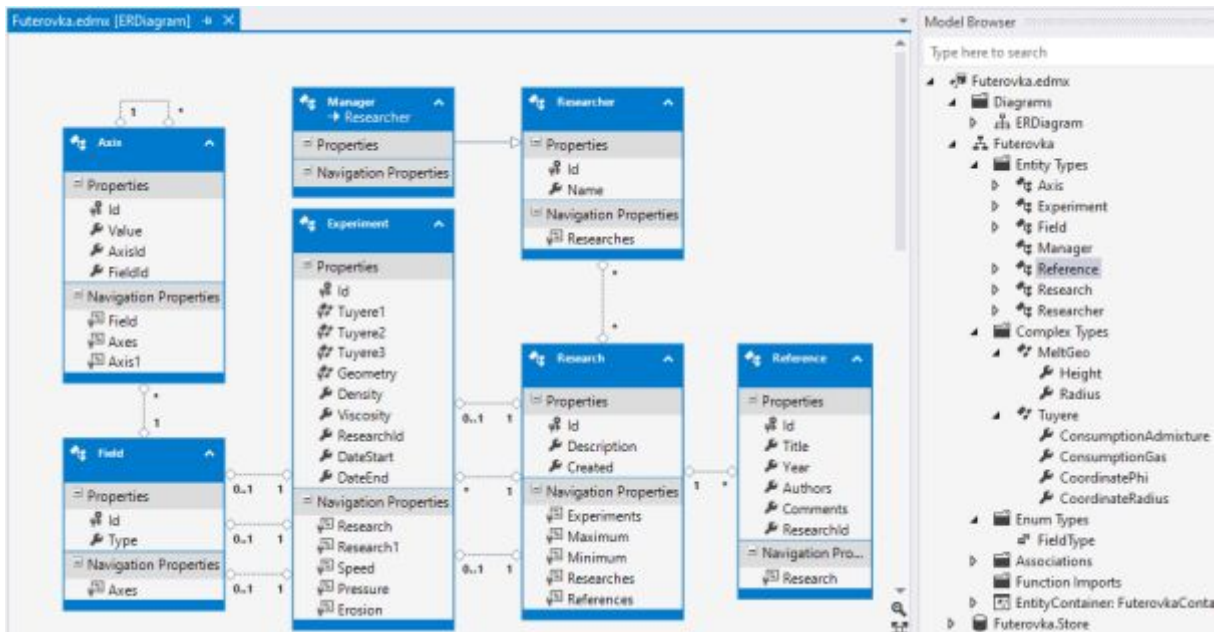


Fig. 2. Entity-Relationship diagram for the domain model of ladle erosion research

To conduct numerical experiments, we use the technological parameters and conditions given in the tabl. 1, 2.

Table 1. Melt parameters for lining erosion experiment

Melt	
Radius	0,956 m (22 cells)
Height	1,7 m (18 cells)
Angular coordinate	2π (36 cells)
Density	7000 kg/m^3
Temperature	1800 K

Table 2. Parameters of blowing lances for the numerical experiment

Blowing tuyeres	
Total gas consumption	40/60/90 l/min
Diameter of lances	0,1 m
1st setting	1 axial tuyere
2nd setting	1 tuyere at half radius
3rd setting	2 opposite tuyeres at half radius
4th setting	3 tuyeres at an angle of 120° between them at half radius
Erosion coefficient	0,1

Fig. 3 shows three graphs with different blowing powers. Turning off the blowing after the first minute significantly slows down further lining erosion.

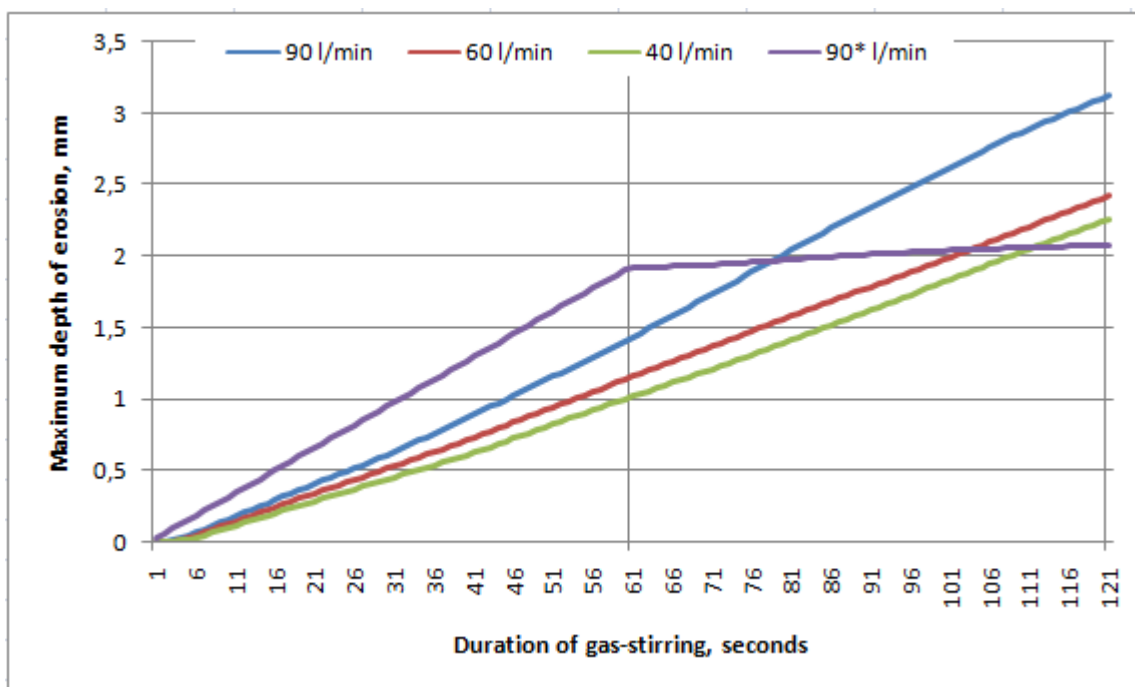


Fig. 3. Erosion in configuration with three tuyeres (the asterisk means turning blowing off at the 60 second)

Results of mathematical modeling can be seen at the website
<https://www.tensorion.com/lab/metallurgy/ladle/erosion>.

Conclusions

The simulation of the process at blowout rates of 40, 60 and 90 l/min and the number of blowout plugs from one to three showed that the greatest erosion is predicted at the bottom, near the blowout tubes, and the acceleration of blowout intensifies erosion by about 15 %. Turning off the tuyere after 1 minute of blowing significantly reduces the erosion by at least 35 %. If we consider the bucket wall, without disconnecting the tuyere, the flow rate of 90 l/min is the most destructive.

References

- [1] Molchanov, L.S., Lantukh, O.S., & Synehin, Y.V. (2019). Physical Modeling of Erosion Destruction of Teeming Ladle Lining in the Process of Its Exploitation. *Bulletin of Vinnitsa Polytechnic Institute* (1), 65–71. DOI: 10.31649/1997-9266-2019-142-1-65-71.
- [2] Morales, R.D., Hurtado, F.A., & Chattopadhyay, K. (2020). Physical and Mathematical Modeling of Flow Structures of Liquid Steel in Ladle Stirring Operations. *Metallurgical and Materials Transactions B.*, 51 (2), 628–648. DOI: 10.1007/s11663-019-01759-x.
- [3] Pandhari, A. (2017). *Modeling of Thermal Stress Cycling in Refractory Materials*. Thesis for the degree of PhD, The university of British Columbia, The Faculty of Graduate and Postdoctoral Studies, Vancouver.
- [4] Salmash, I., & Smirnov, A. (2010). Investigation of stress state and strength of refractory lining steel ladles. *Steel and casting of Ukraine* (9), 48–54.
- [5] Schmitt, N., Berthaud, Y., Hernandez, J. F., Meunier, P., & Poirier, J. (2004). Damage of monolithic refractory linings in steel ladles during drying. *British Ceramic Transactions* (1), 1–20. DOI: 10.1179/096797804225012873.
- [6] Schmitt, N., Hild, F., & Blond, E. (2004). Thermal stresses in the working lining of a ladle during the steel refining process. *British Ceramic Transactions* (6), 1–12.

Список використаної літератури

1. Molchanov L.S., Lantukh O.S., Synehin Y.V. Physical Modeling of Erosion Destruction of Teeming Ladle Lining in the Process of Its Exploitation. *Bulletin of Vinnitsa Polytechnic Institute*. 2019. No 1. p. 65–71. DOI: 10.31649/1997-9266-2019-142-1-65-71.
2. Morales R.D., Hurtado F.A., Chattopadhyay K. Physical and Mathematical Modeling of Flow Structures of Liquid Steel in Ladle Stirring Operations. *Metallurgical and Materials Transactions B*. 2020. Vol. 51, No 2. p. 628–648. DOI: 10.1007/s11663-019-01759-x.
3. Pandhari A. *Modeling of Thermal Stress Cycling in Refractory Materials*. Thesis for the degree of PhD, The university of British Columbia, The Faculty of Graduate and Postdoctoral Studies, Vancouver. 2017
4. Salmash I., Smirnov A. Investigation of stress state and strength of refractory lining steel ladles. *Steel and casting of Ukraine*. 2010. No 9. p. 48–54.
5. Schmitt N., Berthaud Y., Hernandez J. F., Meunier P., Poirier J. Damage of monolithic refractory linings in steel ladles during drying. *British Ceramic Transactions*. 2004. No 1. p. 1–20. DOI: 10.1179/096797804225012873.
6. Schmitt N., Hild F., Blond E. Thermal stresses in the working lining of a ladle during the steel refining process. *British Ceramic Transactions*. 2004. No 6. p. 1–12.

Надійшла до редколегії 22.02.2023